

Winter Gloves



A B C D

Colours of 6721



Material Description of 6721



6721

6721 Special Wind Proof, Breathable and Highly Water Resistant Winter Gloves. 70gm Thinsulate added on the back Palm for extra warmth. Grippy material stitched on the front Palm to give better control of the reins.

Sizes: XS to XXL



6870

6870 Light weight, soft suede winter gloves with 70gm Thinsulate on the back palm for warmth. Double stitching in Silver for elegance. Available in Black colour only

Sizes: XS to XXL

Winter Gloves

Reflection Tape
for night riding



6890



Colours of 6890

140 gm
Thinsulate

6890 A combination of coloured and very light weight Synthetic materials. 140gms Thinsulate used on Front and back plam and thumb to make it extra warm. Reflective tape used on back palm for night riding.

Sizes Gents: XS to XXL
Ladies: XS to XL

140 gm
Thinsulate



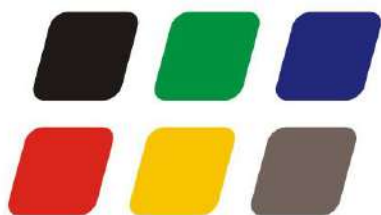
6880

6880 Rubber coated stretchable foreway material used in combination with shark designed neoprene. 140gms Thinsulate used on front and back plam and thumb to make it more warm. Single stitching with Silver colour to add elegance.

Sizes: XS to XXL

Winter Gloves

Available colours



6857

6857 Synthetic gloves with Foreway and 70gms Thinsulate. Light weight and warm gloves which can be used throughout the year. Available in all different colours.

Sizes: Children; 6 years, 8 years, 10 years and 12 years
Adults; XS to XXL



6858

6858 Leather gloves. Top quality drum dyed cow leather gloves with Foreway and 70gms Thinsulate. Light weight and warm gloves which can be used throughout the year. Available in Black & Brown colours.

Sizes: Children; 6 years, 8 years, 10 years and 12 years
Adults; XS to XXL



Winter Gloves



6950-MNR



F

Colours of 6950-MNR

6950-MNR Synthetic gloves with Foreway and 70gms Thinsulate. Light weight and warm gloves which can be used throughout the year. Available in all different colours.

Sizes: Children: 6 years, 8 years, 10 years and 12 years
Adults: XS to XXL



6723

6723 Leather gloves. A classic winter gloves with a combination of wind stopper material, leather and pimpled cotton. 70 gm Thinsulate on back palm.

Sizes: Adults: XS to XXL

Winter Gloves



A Colours of 6722-Outer D



6722-Outer

6722 Outer Cover. It is made from water resistant, breathable and windproof material. A grippy material is added on the front palm for better control of reins.



6722 Double Gloves for Winters. In extreme winter conditions, the outer cover can be worn on the inner gloves to protect from extreme cold. The inner gloves is so designed that during light winter conditions it can be used independently without having the need to use the cover gloves. The inner fleece gloves has leather reinforcements.



B Colours of 6722 Inner



6722 Inner

Winter Gloves



6760



Colours of 6760

6760 Neoprene winter gloves with a combination of pimpled grip material on front palm and journey closure
Sizes: XS to XXL



6759

6759 Neoprene Gloves with Leather on Front Palm
Sizes: XS, S, M, L, XL,
Colours: Black, Brown, Blue, Green, Pink, Purple.



Colours of 6761



6761

6761 Winter gloves made of Neoprene and fleece with leather reinforcements and jersey closure
Sizes: XS to XXL

Winter Gloves



Colours of 6762



6762

6762 Light winter gloves with fleece and pimpled grip material.
Sizes: XS to XXL



Colours of 6763



6763

6763 Fleece gloves with leather designing and jersey closure.
Sizes: XS to XXL

Winter Gloves



6841

6841 Top Quality drum dyed Analin cow leather winter gloves. 70gms Thinsulate on back palm and thumb for warmth. Riding reinforcements in leather
Available in black and brown colours,

Sizes: XS to XXL



6843

6843 Full leather gloves with 70gm Thinsulate on back palm and jersey closure

Sizes: XS to XXL

Colours: Black & Brown



6875

6875 Winter gloves in suede with Thinsulate on back palm and back thumb.

Sizes: XS to XXL

Summer Gloves



6820



Colours of 6820

6820 Synthetic gloves with holes and riding reinforcements.
Sizes: Gents: XS to XL
 Ladies: XS to XL
 Children : 6 years, 8 years, 10 years, 12 years



Colours of 6822



6822

6822 Synthetic gloves with antique Arabian designing and lycra between fingers and knuckles for comfort and better fitting.
Sizes: Gents: XS to XL
 Ladies: XS to XL
 Children : 6 years, 8 years, 10 years, 12 years

Summer Gloves



6833-NSR

6833-NSR Summer Gloves with Pimpled Palm for better rein control and perforated backing for air circulation

Sizes: XS to XL

Colours: Black



Colours of 6854



6854

6854 Ammara gloves with foreway backing material
Sizes: Gents: XS to XXL

Ladies: XS to XL

Children: 6 years, 8 years, 10 years, 12 years



6888A

6888A Synthetic Summer Gloves with Perfect Fitting. Made of Non Tearable Material.

Sizes: XS to XL

Colour: Black

Summer Gloves



6730

6730 Light weight cotton gloves with pimpled grip material on front palm and reinforcements

Sizes Adults: XS to XXL

Child: 6 years, 8 years, 10 years, 12 years



6835

6835 Light weight summer gloves with spotted fabric and perforated mesh.

Sizes: XS to XXL

Colours: Standard as in picture



6834

6834 Leather gloves and perforated material combined together to make a perfect combination.

Sizes: XS to XXL

Colours: Standard as in picture

Summer Gloves

6810 Pimpled material used in combination with leather and synthetic material. Double stitching in silver colour to add elegance. Riding reinforcements in leather. Available in Black colour only.

Sizes: Adults: XS to XL



6810



6855

6855 Synthetic gloves with foreway backing. Available in all different colour combinations.

Sizes: Adults: XS to XXL



6856

6856 leather gloves with foreway backing. Available in all different colour combinations.

Sizes: Adults: XS to XXL



6886

6886 Ultra micro suede gloves with foreway backing. Available in all different colour combinations.

Sizes: Adults: XS to XXL

Summer Gloves



6832-SFQ

6832-SFQ Perforated Mesh and thin Micro Suede Material combined together to make a soft, silky and cool summer gloves.

Colours: Available in all Colours.

Sizes: Adults : XS to XL
Children: 6 years, 8 years, 10 years
12 years



6836

6836 Grippy pimpled material at the front palm makes the most efficient rein controls having anti slip properties. Perforated Mesh at the back palm keeps the hand cool and dry. A combination of both makes a perfect choice for summers.

Colours: Available in all colours

Sizes: Adults : XS to XL
Children: 6 years, 8 years, 10 years
12 years



6837

6837 Perforated Mesh at the back Palm and cow Anilin leather at the front palm combined together to make the most perfect and practical summer gloves which is strong and durable and yet light weight and cool.

Colours: Available in all colours

Sizes: Adults : XS to XL
Children: 6 years, 8 years, 10 years
12 years

Summer Gloves



6830

6830 Summer gloves with a combination of leather and perforated material. Available in Black and Brown colours.

Sizes: Gents: XS to XL, Ladies: XS to XL,



6757

6757 All leather gloves with perforation at the back for air circulation and lycra between fingers for better fitting.

Sizes: XS to XXL



6792

6792 Leather Gloves with Crochet net Back
Sizes: XS to XL
Colours: Black and Brown

Summer Gloves



6798

6798 Leather Gloves with Cotton Backing.
Sizes: XS to XL
Colours: Black and Brown



6798OC

6798OC Fabric gloves with leather reinforcements and leather wrist band.
Sizes: XS to XXL
Colours: Black and Brown



6798OF

6798OF All leather riding gloves with reinforcements.
Sizes: XS to XL
Colours: Black and Brown



6793

6793 Leather Gloves with Cotton Inserts Between Fingers for Better Fit.
Sizes: XS to XL
Colours: Black and Brown

Soft Cow Leather Minichaps



7008 Leather Minichap. Pure Cow drum Dyed soft leather minichap with leather elastication. Available in Black & Dark Brown Colours.
Sizes: Children: 6 years, 8 years, 10 years, 12 years
Adults: XS to XXL

Soft Cow Leather Minichaps



70080A

70080A Ultra Soft Leather Minichap with Leather Elastication and Protection Padding.
Sizes: Children: 6years, 8years, 10years
 12years, 14years
 Adult: XS, S, M, L, XL, XXL



Perforated Mesh
for air circulation

700820A Ultra Soft Leather Minichap with Mesh Elastication and leather Protection Padding.
Sizes: Children: 6years, 8years, 10years, 12years, 14years
 Adult: XS, S, M, L, XL, XXL



700820A

Soft Cow Leather Minichaps

7020 Classical Soft cow leather minichap with 2cm piped elastic on back of the knee
Sizes: XS to XXL



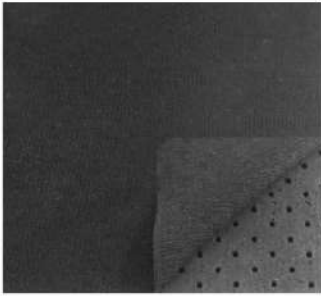
7020



70201

70201 Classical soft cow leather minichap with 2cm stretchable piped elastic on back of the knee and special soft leather pad as reinforcement.
Sizes: XS to XXL

Airprene Minichaps



Airprene Material

Air Flow For
Breathability



Air Flow For
Breathability



70142

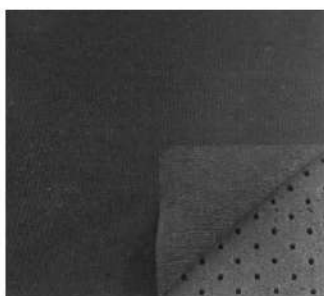
70142 Airprene Minichap:

Airprene is a special neoprene which has holes inside for air passage through. It is warm yet comfortable. A pocket on left leg for putting mobile phones or other important things.

Sizes: XS to XXL

Airprene Minichaps

Air Flow For
Breathability



Airprene Material

70141 Airprene Minichap with 2cm
back of the knee elastic
Sizes: XS to XXL



70141

Perforated Mesh
for air circulation

Air Flow For
Breathability

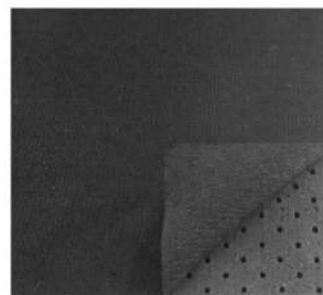


70144

Air Flow For
Breathability



Perforated Mesh
for air circulation



Airprene Material

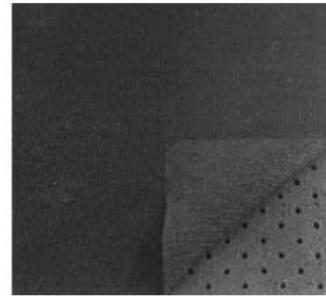
70144 Airprene Minichap with Perforated Mesh
elastication and syntheitc padding for
protection.
Sizes: Children. 6years, 8 years, 10 years, 12 years
Sizes: XS to XXL

Airprene Minichaps



7014

Air Flow For
Breathability



Airprene Material

7014 Airprene Minichap with synthetic elasticsation and additional padding for protection.
Sizes: Children. 6years, 8 years, 10 years, 12 years
Sizes: XS to XXL



7007

7007 Neoprene Minichap with synthetic elasticsation and extra padding for protection. Available in all colours.
Sizes: Children: 6 years, 8 years, 10 years, 12 years
Adults: XS to XXL

Grained Leather Minichaps



70183

70183 **Perforated Cow Leather Minichap with Mesh elastication.**
Classical Summer minichap. Available in black & brown colours.
Sizes: Adults : XS to XXL
 Children: 6 years, 8 years, 10 years, 12 years

Grained Leather Minichaps



Air Flow For
Breathability

Air Flow For
Breathability



7012

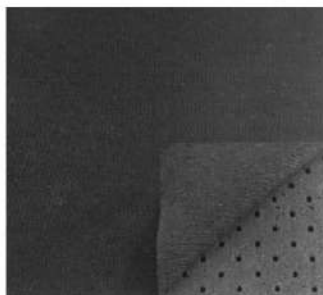
7012 Perforated Leather Minichap. Pure Cow leather minichap with ventilation holes for air breathability. Available in Black and Brown colours.

Sizes: Adults: XS to XXL
Children: 6 years, 8 years, 10 years, 12 years



Air Flow For
Breathability

Air Flow For
Breathability



Airprene Material



Air Flow For
Breathability

70186 Perforated Cow Leather Minichap. Pure Cow leather minichap with ventilation holes for air breathability & addition of Airprene on the elastic panel to provide stretchability and further ventilation. Available in Black and Brown colours.

Sizes: Adults : XS to XXL
Children: 6 years, 8 years, 10 years, 12 years

70186

Grained Leather Minichaps



Air Flow For Breathability

Stretchable Neoprene Elastication



- 70182 Perforated Grained leather minichap** with neoprene elastics.
Colours: Black and Brown
Sizes: Adults : XS to XXL
 Children : 6 years, 8 years, 10 years, 12 years

Stretchable Neoprene Elastication



- 70181 Grained leather minichap** with neoprene elastics.
Sizes: Adults : XS to XXL
 Children : 6years, 8years, 10years, 12 years

Grained Leather Minichaps



7018 Grained leather minichap with elastication
Sizes: Adults : XS to XXL
 Children : 6years, 8years, 10years, 12 years
Colours: Black and Brown

7018



Perforated Mesh
for air circulation



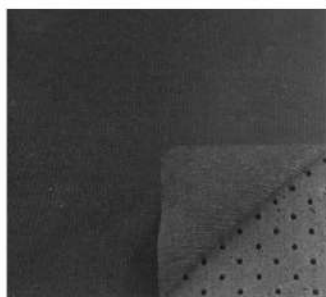
Perforated Mesh
for air circulation

70184 Grained leather minichap with perforated Mesh elastication for air circulation.
Sizes: Adults : XS to XXL
 Children : 6years, 8years, 10years, 12 years
Colours: Black and Brown

70184

Grained Leather Minichaps

Air Flow For Breathability



Airprene Material



70185

70185 Grained Cow Leather Minichap with the addition of Airprene on the elastic panel to provide stretchability and further ventilation.

Sizes: Adults: XS to XXL

Children: 6 years, 8 years, 10 years, 12 years

Colours: Available in Black and Brown colours.



7013

2 cm
Stretchable
Elastic

7013 Grained leather minichap with back of the knee 2cm wide elastic for complete fitting.

Sizes: XS to XXL

Colours: Black and Brown

Cow Suede Leather Minichaps



70030A

70030A Suede leather minichap with leather elasticsation and leather binding. Additional padding for extra protection.

Sizes: Adults : XS to XXL

Children : 6years, 8years, 10years, 12 years

Colours: Black and Brown

Perforated Cow Suede Leather Minichaps

Air Flow For Breathability



Air Flow For Breathability



70031

70031 Perforated suede leather minichap with leather elasticsation and leather binding.

Sizes: Adults : XS to XXL

Children : 6years, 8years, 10years, 12 years

Colours: Available in black & brown.

Stretchable Neoprene Elastication

Air Flow For Breathability



Air Flow For Breathability



70332

70332 Perforated suede leather minichap with neoprene elasticsation.

Sizes: Adults : XS to XXL

Children : 6years, 8years, 10years, 12 years

Colours: Available in black & brown.

Perforated Cow Suede Leather Minichaps



Air Flow For Breathability

Perforated Mesh for air circulation

Air Flow For Breathability



Perforated Mesh for air circulation

70334

70334 Perforated suede leather minichap with Mesh elastication for air circulation.

Sizes: Adults : XS to XXL
Children : 6years, 8years, 10years, 12 years

Colours: Available in black & brown.



Perforated Mesh for air circulation

Perforated Mesh for air circulation

70336 Cow suede leather minichap with Mesh elastication for air circulation.

Sizes: Adults : XS to XXL
Children : 6years, 8years, 10years, 12 years

Colours: Available in black & brown.

70336

Cow Suede Leather Minichaps

7003 Suede leather minichap with leather elastication & leather binding

Sizes: Adults : XS to XXL

Children : 6years, 8years, 10years, 12 years

Colours: Available in black & brown.



7003



70331 Suede leather minichap with neoprene elastication

Sizes: Adults : XS to XXL

Children : 6years, 8years, 10years, 12 years

Colours: Available in black & brown.

70331

Mesh Minichaps



70174OA

70174OA Mesh minichap with Mesh elastication.

The concept of light weight, cool and dry minichaps is the overwhelming factor in designing this minichap. Additional padding at the inside makes sure that the product stays undamaged. Perfect summers Minichap.

Sizes: Adults : XS to XXL

Children : 6years, 8years, 10years, 12 years

Colours: Available in all colour combinations.

Mesh Minichaps

7017 Mesh minichap with leather elastication and leather binding
Sizes: Adults :XS to XXL
 Children : 6years, 8years, 10years, 12 years
Colours: Available in black & brown.



7017



70171

70171 Mesh minichap with synthetic elastication synthetic bonded but oval shaped grained leather pad.
Sizes: Adults :XS to XXL
 Children : 6years, 8years, 10years, 12 years
Colours: Available in different colour combination.

Mesh Minichaps



70172

70172 Mesh minichap with synthetic elastication and synthetic bindings. C type grained leather pad.

Sizes: Adults : XS to XXL

Children : 6years, 8years, 10years, 12 years

Colours: Available in black & brown.



70173

70173 Mesh minichap with neoprene elastication and synthetic bindings. C type grained leather pad.

Sizes: Adults : XS to XXL

Children : 6years, 8years, 10years, 12 years

Colours: Available in black & brown.

Mesh Minichaps

70175 Mesh minichap with stretchable elastic, synthetic bindings and synthetic C pad

Sizes: Adults : XS to XXL
Children : 6years, 8years, 10years, 12 years

Colours: Available in different colour combinations.



70202 Competition half chaps in mesh with 2cm stretchable back of the knee elastic and C type leather grained pad.

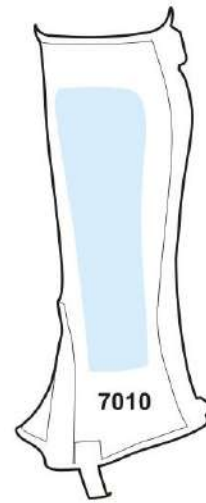
Sizes: Adults: XS to XXL

Colours: Available in black & brown.

Neoprene Minichaps

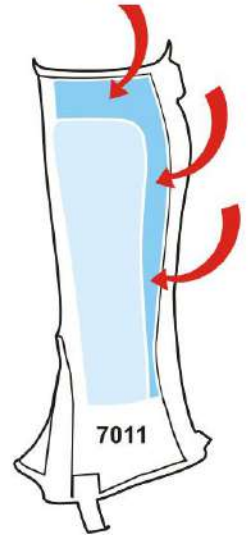


7010



7010

Specially
Designed Extra
Protection Pad



7011

7010 Neoprene Minichap without Elastication.
Padding for Protection.
Colours: Available in Black, Brown, Green, Blue &
Red colours.
Sizes: Adults: XS to XXL

7011 Neoprene Minichap With Additional Padding.
Specially designed Protection Pad to ensure
that there is no space for neoprene to be
damaged.
Sizes: Adults: XS to XXL



7011

Neoprene Minichaps

70131 Neoprene minichap with 2 cm stretchable back of the knee elastic.
Sizes: Adults: XS to XL
Colours: Available in all colours



70131



70132



70132 Neoprene minichap with designed pocket on the leg for placing mobile phones.
Sizes: XS to XL
Colours: Available in all colours

Ammara Minichaps



70042

70042 Ammara minichap with side elastic, covered zip and top stud. Specially designed C pad for protection

Sizes: Adults : XS to XXL

Children : 6years, 8years, 10years, 12 years

Colours: Black & Brown



70043

70043 Ammara minichap with Neoprene elastic, covered zip and top stud. Specially designed C pad for protection.

Sizes: Adults : XS to XXL

Children : 6years, 8years, 10years, 12 years

Colours: Black & Brown

Ammara Minichaps

7004 Ammara minichap with side elastication
Sizes: Adults : XS to XXL
 Children : 6years, 8years, 10years, 12 years
Colours: Available in all colours.



7004



70041

**Stretchable
Neoprene
Elastication**

70041 Ammara minichap with
 neoprene elastication
Sizes: Adults : XS to XXL
 Children : 6years, 8years, 10years
 12 years
Colours: Available in all colours.

Synthetic Minichaps



70052



70052 Synthetic minichap with
pocket for mobile phones.

Sizes: Adults : XL to XXL
Children : 6years, 8years, 10years
12 years

Colours: Available in all colours



7005

7005 Synthetic minichap with elasticsation

Sizes: Adults : XL to XXL
Children : 6years, 8years, 10years, 12 years

Colours: Available in all colours

Synthetic Minichaps

Air Flow For
Breathability



Air Flow For
Breathability



70051

70051 Perforated synthetic minichap with elasticsation

Sizes: Adults : XS to XXL

Children : 6years, 8years, 10years, 12 years

Colours: Available in all colours.



Perforated Mesh
for air circulation



Perforated Mesh
for air circulation

70054 Synthetic minichap with Mesh elasticsation
to provide more air ventilation to keep the legs
dry. Most economical summers minicahps.

Sizes: Adults : XS to XXL

Children : 6years, 8years, 10years, 12 years

Colours: Available in all colours

70054



7027

**7027 Winters Neoprene Minichap.**

Specially designed Neoprene minichap with Fur inside to keep the legs warm. Available in Black & Brown colour.

Sizes: Children: 6 years, 8 years, 10 years, 12 years
Adults: XS to XXL

**7028 Winters Leather Minichap.**

Specially designed leather minichap for winters with fur inside to keep the legs warm. Available in Black & Brown colours.

Sizes: Children: 6 years, 8 years, 10 years, 12 years
Adults: XS to XXL



7028

Long Chaps (Soft Cow Leather)



A separate belt means that the same long chap can be fitted onto different people with same height but different waists without compromising the fitting of the critical areas. Thus every customer gets the benefit of a custom made long chap. Belts are available in different waist sizes as per requirement from 30" to 50".



The elastication at the outer thighs allows excellent fitting on the body. Because of this option the rider feels more comfortable as the chap exactly fits around the critical area and is neither too loose nor too tight.

53000 Leather Long Chap. Made from top quality drum dyed Nakid cow leather. No joints from the waist to the shoes mean that no uncomfortable stitching behind the thighs or behind the back of the knees. Elastication at the outer thighs and a separate belt are the two main features which make this product one of its own kind. Sizes: XS to XL

Long Chaps

(Suede & Neoprene)



53002



53001

53001 Suede Leather Long Chap. Made from top quality drum dyed suede leather. No joints from the waist to the shoes mean that no uncomfortable stitching behind the thighs or behind the back of the knees. Protection padding on the knees to ensure longer life. Elastication at the outer thighs and a separate belt are the two main features which make this design one of its own kind. Sizes: XS to XL

53002 Neoprene Long Chap. No joints from the waist to the shoes mean that no uncomfortable stitching behind the thighs or behind the back of the knees. Protection padding on the knees to ensure longer life. Elastication at the outer thighs and a separate leathert belt are the two main features which make this design one of its own kind. Sizes: XS to XL

Long Chaps (Synthetic)



Inside waterproof lining

53003

53003 Synthetic Long Chap. Made from Water Proof synthetic material which is extremely light weight. No joints from the waist to the shoes mean that no uncomfortable stitching behind the thighs or behind the back of the knees. Elastication at the outer thighs and a separate leather belt are the two main features which make this design one of its own kind. Sizes: XS to XL



Reflective tape at the outside



Inside waterproof lining

70000

70000 Rain Chap. Made from water proof, washable and light weight synthetic material. Sizes: XS to XL

Long Chaps

(Grained Leather)



530040

530040 Grained leather long chap with frills on the sides and back. All made in one piece so no uncomfortable stitching behind the thigh or back of the knee
Sizes: XS to XL



53004

53004 Leather Long Chap. Made from top quality grained leather. No joints from the waist to the shoes mean that no uncomfortable stitching behind the thighs or behind the back of the knees. Elastication at the outer thighs and a separate belt are the two main features which make this product one of its own kind.
Sizes: XS to XL

Long Chaps

(Ammara)



530060

530060

Western long chap in Ammara with frills on the sides and back
 Sizes: XS to XL



53006

53006 Ammara Long Chap. No joints from the waist to the shoes mean that no uncomfortable stitching behind the thighs or behind the back of the knees.
 Elastication at the outer thighs and a separate belt are the two main features which make this product one of its own kind.
 Sizes: XS to XL

Girths

8501 Shoejumping Neoprene Girth.

Neoprene can be separated from the web and can be washed easily.
 Sizes: 100 cm to 145 cm



8501

8500

8500 Dressage Neoprene Girth with Loops.

Neoprene can be separated from the web and can be washed easily.
 Sizes: 40 cm to 80 cm



**3 in 1
Girth**



Leather+Neoprene+Stretchability

Leather Cover



CENTRAL MECHANISM



Stretchable Elastic

8300 Dressage Leather Covered Neoprene Girth with stainless steel buckles for 1" strap. Stretchable from the centre to provide equal and quick relief to the breathing horse. The central mechanism can be easily separated from the leather cover and can be inserted back after washing.



8002 - Dressage Neoprene Girth. Available in 4mm, 6mm, and 8mm thickness. **Sizes:** 45cm to 80cm



800201 - Dressage Neoprene Girth. With single side stretchable elastic. Available in 4mm, 6mm, and 8mm thickness. **Sizes:** 45cm to 80cm



800202 - Dressage Neoprene Girth. With double side stretchable elastic. Available in 4mm, 6mm, and 8mm thickness. **Sizes:** 45cm to 80cm



8006 - Icelandic Girth. Available in 4mm thickness. **Sizes:** 40cm to 80cm



Stretchable Elastic

800601 - Icelandic Girth. Single side stretchable in 4mm thick neoprene. **Sizes:** 40cm to 80cm



Stretchable Elastic

800602 - Icelandic Girth. Double side stretchable in 4mm thick neoprene. **Sizes:** 40cm to 80cm

Girths



8003 - Dressage Neoprene Girth. Available in 6mm thick neoprene. 1" Stainless steel buckles.
Sizes: 45cm to 80cm



8200 - Show Jumping Neoprene Girth. Available in 4mm, 6mm & 8mm thick neoprene.
 1" Stainless steel buckles. **Sizes:** 100cm to 145cm



8302-10 Dressage Neoprene Girth. Available in 10mm thickness 1" Stainless steel buckles.
Sizes: 40cm to 80cm



830202-10 Dressage Neoprene Girth Stretchable. Double side elastic. 1" stainless steel buckles.
Sizes: 40cm to 80cm



8303-10 All purpose / Show Jumping Neoprene Girth 10mm. 1" stainless steel buckles. **Sizes:** 100cm to 145cm



830302-10 All purpose / Show Jumping Double Side Stretchable Neoprene Girth 10mm.
 1" stainless steel buckles. **Sizes:** 100cm to 145cm



8310 - Dressage Girth 8mm non stretchable. 1" Stainless steel buckles.
Sizes: 40cm to 80cm



831001 - Dressage Girth 8mm with one side stretchable elastic. 1" Stainless steel buckles.
Sizes: 40cm to 80cm



8700 - Neoprene Girth with Long Strap. 1" Stainless steel buckles.
Sizes: 40cm to 100cm



8100 - Show Jumping Girth. One side stretchable with 1" stainless steel buckles
Sizes: 100cm to 145cm



8101 - Show Jumping Girth. 1" stainless steel buckles
Sizes: 100cm to 145cm



8861 - Stock Saddle Sircingle Girth in fur
Sizes: 75cm to 100cm

Girths



8601 - Roper Western Girth in Neoprene with 3" buckles in Stainless steel.
Sizes: 70cm to 100cm



8502 - Western Girth, washable Neoprene. The web is velcro stuck to the neoprene and hence the system can be separated for washing, 3" stainless steel buckles.
Sizes: 70cm to 100cm



8600 - Western Neoprene Girth. Available in 6mm neoprene thickness with 3" Stainless steel buckles.
Sizes: 70cm to 100cm



8600 - Stock Saddle Girth. 2" Iron Nickle plated buckles.
Sizes: 70cm to 100cm



8851 - Economy Model Stretchable Racing Cotton Girth. Iron Nickle plated buckles.



8850 - Economy Model Racing Girth. Made of cotton web and 1" Iron Nickle plated buckles.



8801 - Girth Cover in Fur.



8802 - Girth Cover in Fleece.



8402 - Show Jumping Girth. Double side elastic. 1" Stainless steel buckles.
Sizes: 100cm to 145cm



8401 - Dublin Show Jumping Girth. 1" Stainless steel buckles.
Sizes: 100cm to 145cm



8401 - Dressage Girth. **Sizes:** 45cm to 80cm



8401 - Dressage Neoprene Girth. 1" Stainless steel buckles.
Sizes: 45cm to 80cm

Stable Boots

9000 Neoprene Stable Boots for Front & Rear Legs.
Outer part is made of 6mm thick neoprene. The inner part contains five layers of foam covered with soft synthetic material. A set of stable boots contains two front legs & two rear legs.
Sizes: S, M, L



9001 Breathable Stable Boots for Front & Rear Legs.
Outer part is made of 8mm thick breathable material. The inner part contains five layers of foam covered with soft synthetic material. A set of stable boots contains two front legs & two rear legs.
Sizes: S, M, L



Transfer Boots



Rear Leg

Front Leg

9180 Transfer Boots Round Shape
with Fur Lamination & Reflection Tape
Sizes: M, L



Rear Leg

Front Leg

9190 Transfer Boots Fur Laminated
Sizes: Standard



Rear Leg

Front Leg

9181 Transfer Boots Pointed Shape with
Fur Lamination and Reflection Tape
Sizes: M, L



Fur Lining

Boots

Side View



9101 Splint Boots in Neoprene for Rear Legs.
with double velcro closure
Sizes: S, M, L

Side View



9102 Splint Boots in Neoprene
for Rear Legs.
Sizes: S, M, L

Side View



9100 Neoprene Ankle Boots for Rear Legs.
Sizes: S, M, L

Shin & Ankle Boots



9122 Leather Covered Shin and Ankle
Neoprene boot with Plastic Pad Double
Velcro Stretchable Closure type.
Sizes: S, M, L



9120 Shin and Ankle Neoprene boot
non stretchable velcro closure type
with Plastic Pad.
Sizes: S, M, L



9121 Shin and Ankle Neoprene boot
with Plastic Pad Double Velcro Stretchable
Closure type.
Sizes: S, M, L



9103 Hind Ankle Neoprene Boots with
Plastic Shield.
Sizes: S, M, L

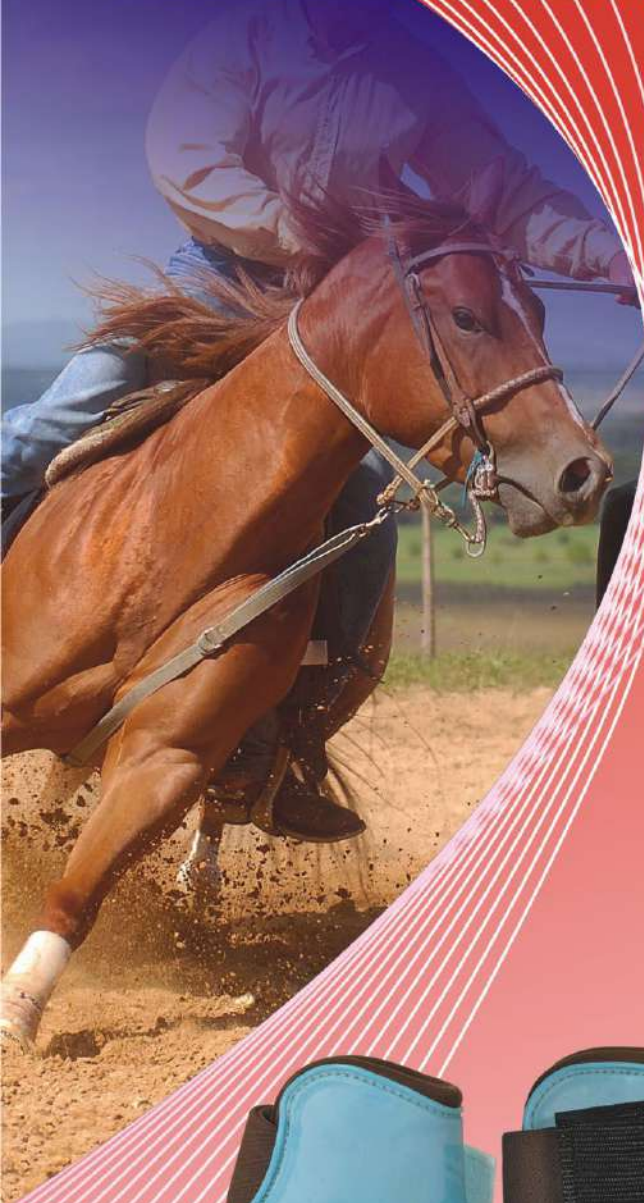


9171 6mm Neoprene Bell Boots with Leather
Grained Rexene and Reflection Tape
Double Velcro, Stretchable Closure Type.
Sizes: S, M, L, XL



9170 6mm Neoprene Bell Boots, Double
Velcro, Stretchable Closure Type.
Sizes: S, M, L, XL

Fetlock Boots



9140 Jump boots in neoprene plastic covered



9141 Hind ankle neoprene boots plastic covered



This packing contains a pair of front legs
& a pair of rear legs

Boots



9215 Suede Covered Hind Ankle
4mm Neoprene Boot,
Sizes: S, M, L



9210 6mm Neoprene Hind Ankle Boot,
with Mango Shield.
Sizes: S, M, L



9200 FetLock Boots in 6mm Neoprene
Sizes: S, M, L

8900 Acrylic Bandages
3 Meter Length.



8901 Fleece Bandage
3 Meter Length.



10000 Bandage wrap in 5 Layers of foam
Sizes: 50cm x 60cm

Saddle Pads

97000 Saddle cover for carrying saddles.



97000



97500

97500 Saddle Pads square shaped.

97501 Saddle Pads saddle shaped.



97501