

Grippers

Manufacturers & Exporters of Horse Riding Equipment

6th Edition

Soft Leather Minichaps

702013 : Made from Genuine Cow Super Soft Leather. The leather is totally drum dyed and very soft. The color combination with 80% Brown and 20% Black makes it look very attractive. A 2cm elastic panel at the back of the knee provides with just the excellent fitting a rider needs. Buttoned at the top and bottom for complete protection.



702015 : Made from Genuine Cow Super Soft Leather. The leather is totally drum dyed and very soft. The colour combination with 80% Black and 20% Brown makes it look very different. A 2cm elastic panel at the back of the knee provides with just the excellent fitting a rider needs. Buttoned at the top and bottom for complete protection. Genuine YKK zips for durability. Sizes: SXS to XXL

Soft Leather Chaps



70084

70084 Soft leather chaps with side zip and back of the knee stretchable elastic. Available in Full black with patent trim and black/brown with brown patent trim and brown thread.
Sizes: Adults XS to XXL

Soft Leather Chaps



700813

700813 Soft leather chaps with side zip which is elegantly covered with leather. Double studded and back of the knee elastic.

Sizes: Adults XS to XXL

Soft Leather Chaps



702055

702055 Soft leather chaps with elegant design. Available with silver reflective piping and also with black/brown combination. Double studded and back of the knee elastic.
Size: Adults XS to XXL

Leather Chaps



2cm off centered
zip to the outer side
for easy closure

702070

Plain Strong Cow Leather
On the Inner Side



Soft Cow Leather
On the Outer Side



702070 A unique half chaps with a combination of 2 different leathers. The inside of the chaps is made from a plain strong cow leather to withstand the hardships of close contact and the outside of the chap is made from soft cow leather to keep the wearing comfort. Double studded and back of the knee elastic and 2cm off centered zip for easy closing.
Sizes: Adults XS to XXL

Leather Chaps



2cm off centered
zip to the outer side
for easy closure

702050

Single Pannel leather
with no seam Sticking



702050 A full panel leather half chaps with no stitch seam on the inside of the leg. A 2cm off-centered zip makes the opening and closing very easy. Double studded and back of the knee elastic.

Sizes: Adults XS to XXL



102030101

Most Popular model combining leather and suede together in one pair.
Available in brown also

Introduction of New innovative **"Magic Chaps"** with multiple materials and colour combinations

The Design of Magic Chaps

This minichap is so designed that it can be worn inside-out on both sides. One side is soft leather and the other side is suede. The rider may wear the minichap on leather side during one ride, and may wear the same minichap on suede side during the next ride by just turning the minichap inside-out. We can not only combine different materials in one minichap but we can also combine different colours in the same pair. For example, we can combine black and brown suede together in one pair so the rider can use the black suede side one day and he can use the brown suede side the other day by just turning the chaps inside out. All other colour combinations can be produced on request. The Original YKK reversible zippers have been used to act perfectly on both sides.



102030100

Black soft leather and
Brown Soft leather



102030101

Black soft leather and
Black Suede leather



102030106

Brown soft leather and Brown
Neoprene with leather pad



102030103

Black Suede leather and
Brown Suede leather



102030104

Black Suede leather and
Grey Suede leather



102030107

Brown Suede leather and Brown
Neoprene with leather pad

LEATHER-PRENE MINICHAPS

WHY IS LEATHER-PRENE SO FRIENDLY TO RIDERS ???

Leather-Prene is a combination of leather & Airprene. Airprene is a material developed from advancements in neoprene fabrication using a special process. Air is able to circulate through a multiple series of small perforations extending through the closed cell foam. Skin can "breathe" while moisture is released through the perforations, resulting in a reduction of moisture accumulation on the skin. The discomfort of excessive heat due to prolonged use is virtually eliminated. Muscles, tendons and ligaments stay loose, flexible and warm.



702022

702022 : With a patent top to enhance the beautiful look. A Thin layer of Genuine leather is pasted on top of the Airprene to give the close contact advantage to the rider. Double Buttoned at the top and bottom. 2cm Elastic along the back of the knee to make a perfect fit. **Sizes:** XS to XXL



702023

702023 : A thin layer of genuine leather is pasted on top of Airprene which allows maximum close contact facility to the rider. The half chap becomes very durable and light weight to wear. It allows maximum air circulation around the legs and calf area. 2cm Elastic running from top to bottom. **Sizes:** XS, S, M, L, XL, XXL

Max-Pro Leather Minichaps

MAX PRO HALF CHAPS are made from Genuine Cow Leather. Combination of perforated and non-perforated leathers in the same product allows the rider the luxury of enjoying two different types of leathers in the same pair. The outside is always perforated to ensure maximum air breathability and removal of excess heat and moisture from the legs.



7200-OA

7200-OA : Made from 1.3/1.4mm thick cow Leather. Outside leather is perforated whereas the inside leather is without holes and has a leather pad for protection and grip. A 2cm stretchable elastic allows good and tight fitting all around the legs. A thin 1cm reflective tape is stitched on the front for better visibility. Elasticated buttons used on the top and bottom. Available in Black and Brown colours.



7201-OA

7201-OA : Made from 1.3/1.4mm thick cow Leather and 1.8mm thick suede leather. Outside leather is perforated whereas the inside suede leather is without holes and has a suede leather pad for protection and grip. A 2cm stretchable elastic allows good and tight fitting all around the legs. A thin 1cm reflective tape is stitched on the front for better visibility. Elasticated buttons used on the top and bottom. Available in Black and Brown colours.

Max-Pro Leather Minichaps



7203-OA : Made from 1.3/1.4mm thick cow Leather and 1.8mm thick suede leather. Outside Suede leather is perforated whereas the inside Genuine leather is without holes and has a leather pad for protection and grip. A 2cm stretchable elastic allows good and tight fitting all around the legs. A thin 1cm reflective tape is stitched on the front for better visibility. Elasticated buttons used on the top and bottom. Available in Black and Brown colours.

7220-OA : Made from 1.8mm thick suede leather. Outside Suede leather is perforated whereas the inside suede leather is without holes and has a leather pad for protection and grip. A 2cm stretchable elastic allows good and tight fitting all around the legs. A thin 1cm reflective tape is stitched on the front for better visibility. Elasticated buttons used on the top and bottom. Available in Black and Brown colours.



7203-OA

Max-Pro Leather Minichaps



7203-OA : Made from 1.3/1.4mm thick cow Leather and 1.8mm thick suede leather. Outside Suede leather is perforated whereas the inside Genuine leather is without holes and has a leather pad for protection and grip. A 2cm stretchable elastic allows good and tight fitting all around the legs. A thin 1cm reflective tape is stitched on the front for better visibility. Elasticated buttons used on the top and bottom. Available in Black and Brown colours.

7203-OA

7220-OA : Made from 1.8mm thick suede leather. Outside Suede leather is perforated whereas the inside suede leather is without holes and has a leather pad for protection and grip. A 2cm stretchable elastic allows good and tight fitting all around the legs. A thin 1cm reflective tape is stitched on the front for better visibility. Elasticated buttons used on the top and bottom. Available in Black and Brown colours.



7203-OA

How to measure your size in Magic chaps, Comfort chaps

Method 1.

Chose from our standard Kids & Adults sizes as below :-

Riding Length (RL)

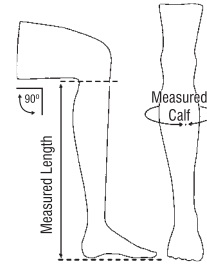
1. Length is measured bare footed, from the ground to the back of the knee. This is called Measured Length
2. Reduce 3cm from the measured length to find your comfortable "Riding Length" (RL)

Riding Calf (RC)

1. Measure the calf from the widest part in centimetres and call it Measured Calf.
2. While Measuring the calf apply normal pressure.
3. Now, Reduce 2cm from the Measured Calf to find out your exact "Riding Calf (RC)"

KIDS

Size	Riding Length (RL) cm	Riding Calf (RC) cm	Ankle Width cm
6 years	28	26	20.5
8 years	30	27	21
10 years	33	28	21.5
12 years	36	30	22.5



ADULTS

Size	Riding Length (RL) cm	Riding Calf (RC) cm	Ankle Width cm	Size	Riding Length (RL) cm	Riding Calf (RC) cm	Ankle Width cm
XXS	38	32	23.5	LS	41	37.5	26.25
XS-short	38	34	24.5	L	44	37.5	26.25
XS	41	34	24.5	LT	47	37.5	26.25
XST	44	34	24.5	XLS	42	39	27
SS	39	35	25	XL	45	39	27
S	42	35	25	XLT	48	39	27
ST	45	35	25	XXL	45	41	28
MS	40	36	25.5				
M	43	36	25.5				
MT	46	36	25.5				

Size chart for Competition Half Chaps, Leather-Prene Half Chaps and Max-Pro Half Chaps

Size	Riding Length	Outside Length	Top Width	Calf Width	Ankle Width
XXS	37	41.5	27.5	29	22
XS-Short	37	41.5	29.5	31	23
XS-Regular	39	43.5	29.5	31	23
XS-Tall	41	45.5	29.5	31	23
S-Short	39	43.5	31.5	33	24
S-Regular	41	45.5	31.5	33	24
S-Tall	43	47.5	31.5	33	24
M-Short	41	45.5	33.5	35	25
M-Regular	43	47.5	33.5	35	25
M-Tall	45	49.5	33.5	35	25
L-Short	43	47.5	35.5	37	26
L-Regular	45	49.5	35.5	37	26
L-Tall	47	51.5	35.5	37	26
XL-Short	46	50.5	37.5	39	27
XL-Regular	46	50.5	37.5	39	27
XL-Tall	46	50.5	37.5	39	27
XXL	47	51.5	39.5	41	28

Soft Leather Minichaps

Double layer of strong plain cow leather

Soft and thick cow leather that easily shapes around the legs.

702060 Genuine Soft cow leather chaps with patent trim on the outer side. The inside is reinforced with a double layer of Plain strong leather. This enhances the durability of the chaps.
Sizes: Adults XS to XXL



702060



Genuine cow leather for close contact

Grained matching synthetic



702061

702061 Economical Close contact half chaps with back of the knee zip. The inside of the chap is made from Genuine Cow leather so as to perform efficiently during close contact. The outside of the chap is made from Matching grain synthetic. This combination allows the product to perform the same functions with much more economy to the rider.
Sizes: Adults XS to XXL

Soft Leather Minichaps

702025 Genuine Soft Cow leather chaps with back of the knee zip closure. Genuine YKK zips. On the inner side, plain strong leather is used so as to increase the durability of the chaps when in contact with the saddle, while, on the outer side the leather is very soft and smooth. This combination increases the life of the leather.

Sizes: Adults XS to XXL

Inside Strong
Plain Cow
Leather



702025



702030A

702030A Genuine Soft Cow leather chaps with back of the knee zip closure. Crocodile design patent top for enhanced look.

Sizes: Adults XS to XXL

Soft Leather Minichaps

702034 Soft Cow leather Half Chaps with Back of the Knee Zip.
Sizes: Adults XS to XXL



702034

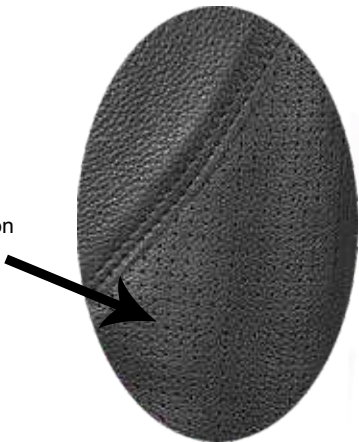


702018

702018 Soft Cow leather Half Chaps with Back of the Knee Zip. Patent trim for better look.
Sizes: Adults XS to XXL

Soft Leather Minichaps

Perforated leather for better air circulation around the leg



7020142

7020142 Soft Cow leather Half Chaps with Back of the Knee Elastic. Perforated leather panel in the middle for better air circulation.
Sizes: Adults XS to XXL

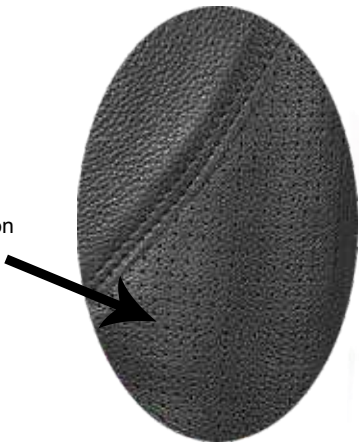


702033

702033 Soft Cow leather Half Chaps with Back of the Knee Zip. Large elastic panel to make a better contoured Fit to the leg.
Sizes: Adults XS to XXL

Soft Leather Minichaps

Perforated leather for better air circulation around the leg



7020142

7020142 Soft Cow leather Half Chaps with Back of the Knee Elastic. Perforated leather panel in the middle for better air circulation.
Sizes: Adults XS to XXL

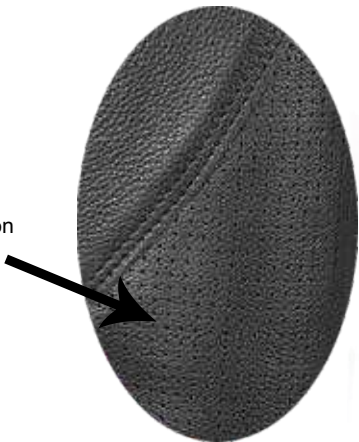


702033

702033 Soft Cow leather Half Chaps with Back of the Knee Zip. Large elastic panel to make a better contoured Fit to the leg.
Sizes: Adults XS to XXL

Soft Leather Minichaps

Perforated leather
for better air circulation
around the leg



7020142 Soft Cow leather Half Chaps with Back of the Knee Elastic. Perforated leather panel in the middle for better air circulation.
Sizes: Adults XS to XXL



7020142



702033

702033 Soft Cow leather Half Chaps with Back of the Knee Zip. Large elastic panel to make a better contoured Fit to the leg.
Sizes: Adults XS to XXL

Soft Leather Minichaps



700810

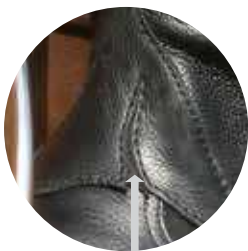


Underneath elastic
for stretch

700810: Soft leather chaps with thin elastics used on the side of Zips and at the back of the knee.

Available in Black and Brown colours.

Sizes: XS to XXL



Underneath elastic
for stretch

700811 : Soft leather half chaps with cut design on the side panel for stretch. Patent binding alongside of the zips. Genuine YKK zips and brass. Available in Black and Brown colours.
Sizes: XS to XXL



700811

Vintage Leather Minichaps

7070 Vintage leather chaps in Maroon and Camel colours with black spotting. Back of the knee zips and elegant seamless full leather panel.

Sizes: Adults XS to XXL



7070



7071

7071 Vintage leather chaps in Maroon and Camel colours with a combination of black and brown leathers. Back of the knee elastic.

Sizes: Adults XS to XXL

7072 Vintage leather chaps in Maroon and Camel colours with a combination of black and brown stretch panel leathers.

Sizes: Adults XS to XXL

7072

1.80 mm Grained Soft Leather Minichaps



70132 1.80 mm thick and grained Cow leather Half Chaps with Back of the Knee Elastic. Tan leather on top. There is also a matching black and tan gloves available in this model separately.

Sizes: Adults XS to XXL



70132



7013

7013 1.80mm thick and grained Cow leather Half Chaps with Back of the Knee Zip. Made in Full single panel and has no seam stitching inside of the leg.

Sizes: Adults XS to XXL

1.80 mm Grained Soft Leather Minichaps

70134 1.80mm thick and grained Cow leather
Half Chaps with Silver and Brown colours
running on the outer side.

Sizes: Adults XS to XXL



70134



70133

70133 1.80mm thick and grained Cow leather Half Chaps
with side stretch elasticated panel.

Sizes: Adults XS to XXL

Soft Leather Minichaps

Inside Strong
Plain Cow
Leather



700816

700816 Soft Cow leather chaps with 3cm Ribbed elastic. Genuine YKK zips are used. The zip is off-centered to the outer side for easy catch and closure. On the inner side, plain strong leather is used so as to increase the durability of the chaps when in contact with the saddle, while, on the outer side the leather is very soft and smooth. This combination increases the life of the leather.

Sizes: Adults XS to XXL

Inside Strong
Plain Cow
Leather



700816P

700816P Soft Cow leather chaps with 3cm Plain elastic. Genuine YKK zips are used. The zip is off-centered to the outer side for easy catch and closure. On the inner side, plain strong leather is used so as to increase the durability of the chaps when in contact with the saddle, while, on the outer side the leather is very soft and smooth. This combination increases the life of the leather.

Sizes: Sizes: Adults XS to XXL

Gaitors



Elasticated Strap



Breathable Lining inside

7103: Genuine leather Gaitors with inside lining of genuine perforated leather. Side Elastic at the back of the knee allows good fitting. Adjustable elastic straps at the top and bottom. Original YKK zippers used.

Sizes: Adults XS to XXL



Breathable Lining inside

7104: Synthetic leather Gaitors with Patent top. Inside lining of perforated synthetic material. Side Elastic at the back of the knee allows good fitting. Adjustable elastic straps at the top and bottom. Original YKK zippers used.

Sizes: Adults XS to XXL

Gaitors



Breathable Lining inside

7105 : Genuine leather Gaitors with inside lining of genuine perforated leather. Side Elastic at the back of the knee allows good fitting. Adjustable elastic straps at the top and bottom. Original YKK zippers used.
Sizes: Adults XS to XXL



Breathable Lining inside

7106 : Synthetic leather Gaitors with a thin Patent line to enhance the look. Inside lining of perforated synthetic material. Side Elastic at the back of the knee allows good fitting. Adjustable elastic straps at the top and bottom. Original YKK zippers used.
Sizes: Adults XS to XXL



Endurance And Neoprene Chaps



7010-02.5

7010-02.5 Race Riders endurance chaps with specially designed silicone padding and reflective binding along the zip.
Sizes: Adults XS to XXL



7010

7010-04 4mm Neoprene Chaps with Specially designed horse head shaped silicone pad for more grip.
Sizes: Adults XS to XXL

Water Resistant,Breathable And Washable Endurance Chaps



70062



70062 Water Resistant, light weight and breathable half chaps.
The pair weighs less than 200 gms. Washable.
Sizes: Adults XS to XXL



Soft Cow Leather Minichaps



7008 Leather Minichap. Pure Cow drum Dyed soft leather minichap with leather elastication. Available in Black & Dark Brown Colours.
Sizes: Children: 6 years, 8 years, 10 years, 12 years
Adults: XS to XXL

Soft Cow Leather Minichaps



70080A

70080A Ultra Soft Leather Minichap with Leather Elastication and Protection Padding.
Sizes: Children: 6years, 8years, 10years, 12years, 14years
 Adult: XS, S, M, L, XL, XXL



Perforated Mesh
for air circulation

700820A Ultra Soft Leather Minichap with Mesh Elastication and leather Protection Padding.
Sizes: Children: 6years, 8years, 10years, 12years, 14years
 Adult: XS, S, M, L, XL, XXL



700820A

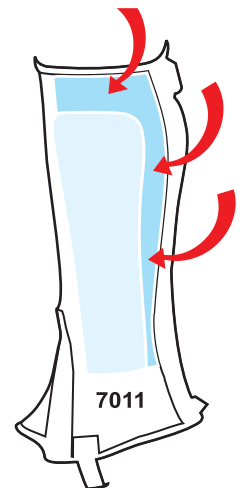
Neoprene Minichaps



7010



Specially
Designed Extra
Protection Pad



7010 Neoprene Minichap without Elastication.
Padding for Protection.
Colours: Available in Black, Brown, Green, Blue &
Red colours.
Sizes: Adults: XS to XXL

7011 Neoprene Minichap With Additional Padding.
Specially designed Protection Pad to ensure
that there is no space for neoprene to be
damaged.
Sizes: Adults: XS to XXL

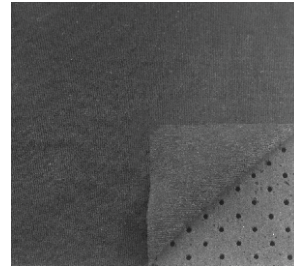


7011

Airprene Minichaps



70144



Airprene Material

70144 Airprene Minichap with Perforated Mesh elastication and syntheitc padding for protection.

Sizes: Children. 6years, 8 years, 10 years, 12 years
Sizes: XS to XXL



7007 Neoprene Minichap with synthetic elastication and extra padding for protection. Available in all colours.

Sizes: Children: 6 years, 8 years, 10 years, 12 years
Adults: XS to XXL

Cow Suede Leather Minichaps



70030A

70030A Suede leather minichap with leather elasticsation and leather binding. Additional padding for extra protection.

Sizes: Adults : XS to XXL
Children : 6years, 8years, 10years, 12 years

Colours: Black and Brown

Perforated Cow Suede Leather Minichaps



70334



70334 Perforated suede leather minichap with Mesh elastication for air circulation.
Sizes: Adults : XS to XXL
 Children : 6years, 8years, 10years, 12 years
Colours: Available in black & brown.



70336

70336 Cow suede leather minichap with Mesh elastication for air circulation.
Sizes: Adults : XS to XXL
 Children : 6years, 8years, 10years, 12 years
Colours: Available in black & brown.

Comfort Chaps

7330 OA Suede leather Half chaps with Black and Brown colours and black Suede padding on the inside.



7340 OA Suede leather Half chaps with Suede padding on the inside. Available in all Black with Silver stitching & all Brown with Beige stitching.

[For sizing and measurements please see page 11 of this catalogue.](#)

Grained Leather Minichaps



Air Flow For
Breathability

Perforated Mesh
for air circulation

70183

70183 Perforated Cow Leather Minichap with Mesh elastication.

Classical Summer minichap.
Available in black & brown colours.

Sizes: Adults : XS to XXL
Children: 6 years, 8 years,
10 years, 12 years



Perforated Mesh
for air circulation

Air Flow For
Breathability



Grained Leather Minichaps

7018 Grained leather minichap with elastication

Sizes: Adults : XS to XXL

Children : 6years, 8years, 10years, 12 years

Colours: Black and Brown

Mesh Chaps

701712 Strong and non-tearable Mesh half chaps with synthetic Ammara Padding for protection.
Sizes: Adults XS to XXL



701712



701713



701713 Strong and non-tearable Mesh half chaps with synthetic Ammara Padding for protection.
Sizes: Adults XS to XXL

Mesh Chaps



701710 Mesh half chaps with Genuine leather padding for protection.
Sizes: Adults XS to XXL



701711 Mesh half chaps with non-tearable synthetic padding.
Sizes: Adults XS to XXL

Mesh Minichaps

70172 Mesh minichap with synthetic elastication and synthetic bindings. C type grained leather pad.

Sizes: Adults : XS to XXL
Children : 6years, 8years, 10years, 12 years

Colours: Available in black & brown.



70172



70178

70178: Mesh Half Chaps with Suede leather padding for protection.

Sizes: XS to XXL.

Mesh Minichaps



70174OA

70174OA Mesh minichap with Mesh elastication.

The concept of light weight, cool and dry minichap. Additional padding at the inside makes sure that the product stays undamaged. Perfect summer Minichap.

Sizes:

Adults : XS to XXL

Colours:

Children : 6years, 8years, 10years, 12years

Available in all colour combinations.



70179

70179: Mesh Half chaps with Synthetic elastication and synthetic padding for protection.

Sizes: XS to XXL.

Ammara Minichaps

70042 Ammara minichap with side elastic, covered zip and top stud. Specially designed C pad for protection
Sizes: Adults : XS to XXL
 Children : 6years, 8years, 10years, 12 years
Colours: Black & Brown



70042



70047



Underneath elastic
for stretch

70047: Suede leather half chaps with 2cm elastic cuts alongside zip. Nice and tight fitting all around the calf and ankle area.

Colours: Black & Brown

Ammara Half Chaps

700412 Ammara half chaps with mesh elastication.
Sizes: Adults XS to XXL



700412



700413

700413 Ammara Half chaps with elegant golden binding along the zip.
Sizes: Adults XS to XXL

Ammara Minichaps

7004 Ammara minichap with side elastication
Sizes: Adults : XS to XXL
 Children : 6years, 8years, 10years, 12 years
Colours: Available in all colours.



7004



700410



Underneath elastic
for stretch

700410: Ammara half chaps with elastics on the side of zip. Nice and tight fitting all around the calf and ankle area.
Sizes: XS to XXL
Colours: Black and Brown.

Silicone Padded Minichaps

Silicone offers added grip to the rider. Using silicone protective pad means more safety and more grip on the horse. Silicone is also beneficial in repelling sweat and water.



702014-20 Soft leather competition half chaps with silicone padded grip on the inner side.
Sizes: XXS to XXL

Silicone Padded Minichaps



70071 : Neoprene Half chaps with Plain side elastic for stretch and Special silicone pad for enhanced grip effect.
Sizes: XXS to XXL



70045 : Ammara Half Chaps with Mesh Elastication on the side panel. Silicone pasted on the inner side of Ammara for enhanced grip.
Sizes: XXS to XXL

Silicone Padded Minichaps



70145 OA

70145 OA : Airprene Half chaps with Ammara Silicone Pad on the inside. Velcro strap closure on the top for tight grip on the legs. **Sizes:** XXS to XXL



70146

70146 : Airprene Half Chaps with Synthetic Elastication and Ammara Silicone Pad on the inner side for saddle grip. **Sizes:** XXS to XXL

Winters Leather and Neoprene Chaps



Inside lining for winters

17008 Winters leather half chaps with inside lining.

Sizes: Adults XS to XXL



17008



17007



Inside lining for winters

17007 Winters Neoprene half chaps with inside lining.

Sizes: Adults XS to XXL

Economical Synthetic Half Chaps

7026 Economy model synthetic half chaps
Sizes: Adults XS to XXL



7026



700510

700510 Kids synthetic half chaps with stones.
Sizes: Adults XS to XXL

Kids Ammara and Synthetic Chaps

700410



700410 Kids Ammara Half chaps with coloured binding along the zip.
Sizes: 6 yrs to 14 years

700411



700411 Kids Ammara Half chaps with coloured triangular designs along the zip.
Sizes: 6 yrs to 14 years

700512



700512 Kids Synthetic Half chaps with Hearts cut-out on the covered zip panel.
Sizes: 6 yrs to 14 years

70301



70301 Kids Synthetic Half chaps with Hearts cut-out on the outer side.
Sizes: 6 yrs to 14 years

Long Chaps (Soft Cow Leather)



530030 Leather Long Chap. Made from top quality drum dyed Natural Cow leather. No Joints from the waist to the shoes mean that no uncomfortable stitching behind the thighs or behind the back of the knees.
Genuine YKK zippers.

Sizes : Ladies XS, XS+, S, S+, M, M+, L, L+.

Summer Gloves

Silicon Grip



68890



68890

Silicone Grip gloves with Airmax Mesh backing. A best seller gloves for summers.

Sizes: Gents: XS to XXL

Ladies: XS to XL

Colours: Different colour combinations on the back palm with Black silicone front.

68891

Silicone Grip gloves with foreway backing. Coloured lycra inserts between fingers for better stretch fitting on the palm.

Sizes: 4 to 11

Colours: Different colour combinations available with Black Silicone front.



68891

Summer Gloves

Silicon Grip



68897

68897

Light and airy summer gloves. A special thin stretch Mesh fabric evenly distributed over the backhand ensures that the back of the hand gets evenly tanned. Front of the palm is made from Reach test approved stretchable silicone fabric for a perfect Grip.

Sizes: 6 to 11.

Colours: Full White, Full Black



68899

Stretchy silicone palmed gloves with an electrifying skylight design on the back palm.

Sizes: 5 to 11.

Colours: All colour with black silicon palm.

Summer Gloves

Silicon Grip

68892

Silicone Grip gloves with plain sereno backing.

Sizes: 4 to 11

Colours: Different colour combinations Available with Black Silicone front.



68892

68893

Silicone Grip gloves with Leather backing.

Sizes: 4 to 11

Colours: Different colour combinations available with Black Silicone front.



68893

Summer Gloves

Silicon Grip



68894

Silicone gloves with a specially textured and stretchy lycra. A hint of diamond stones to increase the elegance.

Sizes: Ladies: XS to XL

Colours: Maroon, Gray, Black, Navy

68895

Comfort stretch lycra gloves with Silicone grip printing on the palm.

Sizes: All Adults

Colours: Only Black



Summer Gloves

Silicon Grip



68950



68950

Silicone Performance Gloves with lycra backing. Silicone adds to more grip and lycra adds to more comfortable fitting. So, the gloves is comfortable and has a lot of rein grip.

Sizes: Gents: XS to XXL

Ladies XS to XL

Colours : Different colours combination available



6811

6811

A Unique combination of leather and Hi-tech grip silicone. Silicone Grip is used for better and easy rein grip and control, Leather used in an elegant manner to add style.

Sizes: 4 to 11

Colours: Different colour combinations available with black silicone front.

Summer Gloves

Silicon Grip



68123

68123

Silicone Grip gloves with Reflector line and diamond lycra backing. Leather reinforcements.

Sizes: Gents: XS to XL

Ladies: XS to XL

Colours: Different colour combinations available with Black Silicone front palm.



6886 SCN

6886 SCN

Silicone Grip gloves with Foreway back and 1" Elastic.

Sizes: Gents: XS to XL

Ladies: XS to XL

Colours: Different colour combinations available with Black Silicone front palm.

Summer Gloves

Synthetic PU



6-682000



6-682000

Synthetic soft PU gloves with excellent rein grip and perfect fitting. Ideal for show jumpers.

Sizes: Gents: XS to XXL

Ladies: XS to XL

Colours: Black, White, Navy Blue, Yellow, Beige and Chocolate Brown.



6-682001



6-682001

Synthetic soft PU gloves with excellent rein grip and perfect fitting. Ideal for show jumpers. Designed curved lycra on knuckles for comfort.

Sizes: Gents: XS to XXL

Ladies: XS to XL

Colours: Black, White, Navy Blue and Chocolate Brown.



6-2-682002

6-2-682002

A combination of Synthetic Soft Grip and Plain Sereno with Lycra back

Sizes: 4 to 11

Colours: Different colour combinations with Black, White, Navy Blue and Dark Brown.



6-682003

Thin synthetic Snake Sereno gloves with lycra backing. One of the most top selling materials make this a popular product.

Sizes: Gents: XS to XXL

Ladies: XS to XL

Colours: Different Colours with black backing.



6-682003



6-682004

Synthetic Soft Grip with stretch Lycra on the back palm.

Sizes: 4 to 11

Colours: Different colour combinations with Black, White, Navy Blue and Dark Brown.

6-682004

6-2-682005

A combination of Synthetic Soft Grip and Plain Sereno with lycra slots on knuckles and fingers.

Sizes: 4 to 11

Colours: Different colour combinations with Black, White, Navy Blue and Dark Brown.



6-2-682005

6-2-682006

A combination of Synthetic Soft Grip and Plain Sereno with a triple wi-fi design.

Sizes: 4 to 11

Colours: Different colour combinations with Black, White, Navy Blue and Dark Brown.



6-2-682006

6-682007

Synthetic Soft Grip gloves with elastic lycra on the knuckles to allow comfort in hand movement. Holes on the fingers allow air ventilation.

Sizes: 4 to 11

Colours: Black, white, Navy Blue and Dark Brown



6-682007



6-2-682008

6-2-682008

A combination of Synthetic Soft Grip and Plain Sereno provides unique feature to this gloves. Lycra on knuckles for extra fit.

Sizes: 4 to 11

Colours: Different colour combinations with Black, White, Navy Blue and Dark Brown.



6-682009

6-682009

Synthetic Soft Grip with stretch Diamond Lycra on the back palm.

Sizes: 4 to 11

Colours: Different colour combinations with Black, White, Navy Blue and Dark Brown.



6-682010

Synthetic Soft Grip with stretch Lycra on the back palm.

Sizes: 4 to 11

Colours: Different colour combinations with Black, White, Navy Blue and Dark Brown.



6-2-68541

A combination of Synthetic Soft Grip and Plain Sereno with Airmax Mesh on back

Sizes: 4 to 11

Colours: Different colour combinations with Black, White, Navy Blue and Dark Brown.



6-68491

Synthetic Soft Grip with stretch Lycra on the back palm.

Sizes: 4 to 11

Colours: Different colour combinations with Black, White, Navy Blue and Dark Brown.

Perfect Stretchable Gloves for Riding





6-6728

Synthetic Soft Grip with Water Resistant and Windproof fabric on the back. All weather gloves.

Sizes: 4 to 11

Colours: Different colour combinations with Black, White, Navy Blue and Dark Brown.



6-6886-1

Synthetic Soft Grip with Designed Lycra on the back palm for stretch.

Sizes: 4 to 11

Colours: Different colour combinations with Black, White, Navy Blue and Dark Brown.



6-6824A2

Synthetic Soft Grip with lycra on knuckles and half fingers of back palm.

Sizes: 4 to 11

Colours: Different colour combinations with Black, White, Navy Blue and Dark Brown.

Synthetic Soft Grip Gloves

Double layer reinforcements at the main areas increase friction



High grade lycra extend the flexibility, breathability and comfortable



6-6824A1



Easy on/off stretchy wrist for optimal fitting

Sizes: 4 to 11

Colours: Different colour combination with black



6-6824A3

6-6824A3

Synthetic Soft Grip with stretch lycra line running along 3 finger lines to provide easy stretch fitting on the palm.

Sizes: 4 to 11

Colours: Different colour combinations with Black, White, Navy Blue and Dark Brown.



6-6824A4-R

6-6824A4-R

Textured synthetic sereno gloves with air -cool holes on the back palm and stretch lycra on knuckles.

Sizes: 6 to 11

Colours: Different colour combinations.



6-6824A5



6-6824A5

Stretchy textured grip sereno palm with a combination of lycra on black palm.

Sizes: 6 to 11

Colours: Different colour combinations available.



6-6824A6

6-6824A6

An Elegant and comfortable summer gloves with synthetic textured stretch sereno material.

Sizes: 6 to 11

Colours: Different colour combinations available.

Summer Gloves

Synthetic PU



Comfort gloves with airy cool-max stretchy Mesh around the Knuckle area and textured synthetic sereno palm.

Sizes: 5 to 11

Colours: Black, Navy, Brown, White

6-6824A7-SG



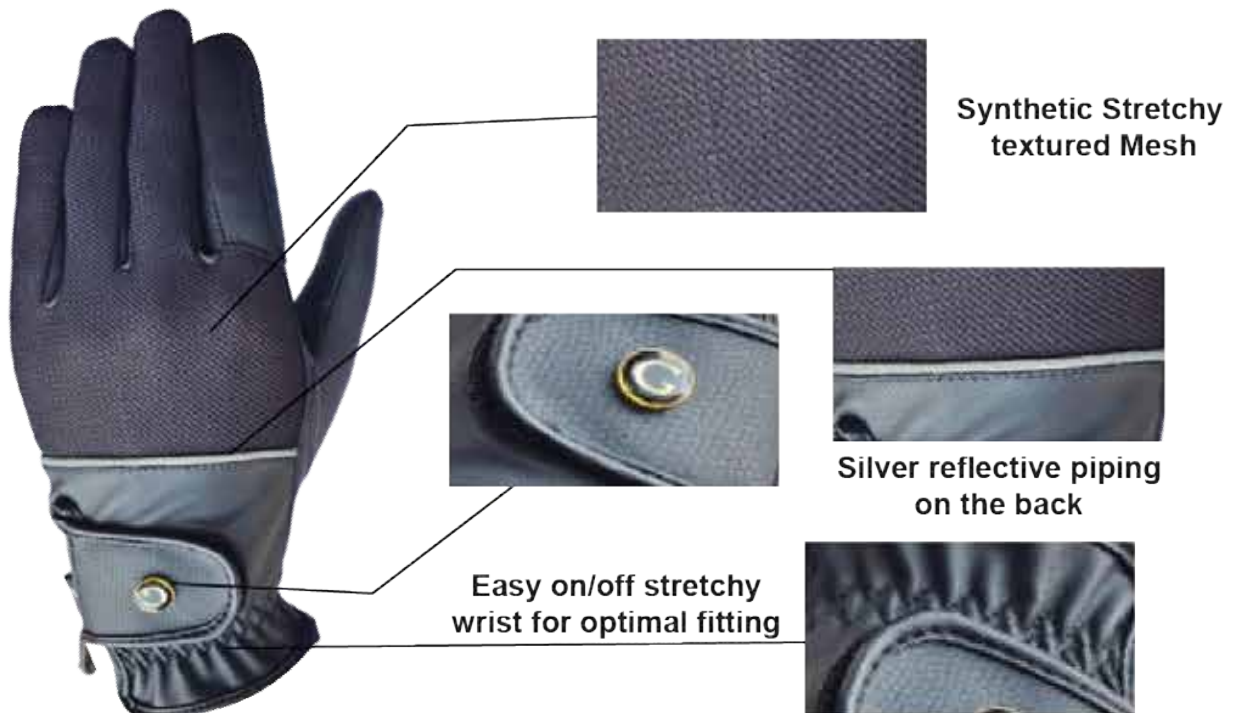
synthetic grip sereno on front and back palm with air-max cool, Mesh around the knuckle area for easy bending and closure of the hand.

Sizes: 6 to 11

Colours: Black, White, Navy and Brown

6-6824A9-R

6-6824A8



Colours: Black Brown Navy White

Summer Gloves

Leather Gloves



3-682000

Cow Analin Soft Leather gloves.

Sizes: Gents XS to XL
Ladies XS to XL

Colours: Black, Chocolate Brown, Tan Brown, Chocolate Brown/Tan Brown.



3-6799

Cow Analin soft leather gloves with Lycra on knuckles and finger holes

Sizes: Kids 4years to 12 years

Sizes: Gents XS to XL
Ladies XS to XL

Colours: Full Black, Full Chocolate Brown, Full Tan Brown, Chocolate Brown/Tan Brown.

Summer Gloves

Leather Gloves



3-6750



3-6750

Cow Analin Soft Leather gloves with Matching Plain sereno synthetic backing for comfort.

Sizes: Gents XS to XL

Ladies XS to XL

Colours: Black, Chocolate Brown, Tan Brown, Chocolate Brown/Tan Brown.



3-6751

Cow Analin soft leather gloves with Lycra on knuckles and single holes on fingers.

Sizes: Gents XS to XL

Ladies XS to XL

Colours: Full Black, Full Chocolate Brown, Full Tan Brown, Chocolate Brown/Tan Brown



3-6751

Summer Gloves

Leather Gloves



3-6849



3-6849

Made from top quality drum dyed Analin leather, which is very soft and strong to with-hold the riding effects for a longer duration. Ideal summer gloves..

Sizes: Gents : XS to XXL

Ladies: XS to XXL

Colours: Front black and back different Colours available.



A

B

C

D

E

3-6819

One of the most popular and effective summer gloves with a combination of leather and lycra. Inserts of lycra have been carefully used at important areas to enable the leather gloves to fit perfectly onto the hand without having a snuggy and loose fitting. Different colours lycra can be used to make different colourful gloves in combination with black colour.

Sizes: Gents: XS to XL

Ladies: XS to XL

Children: 6yrs, 8yrs, 10 yrs, 12 yrs

Colours: Different Colours Combination available.



3-6819

Summer Gloves

Leather



3-6798

3-6798 Leather Gloves with Cotton Backing.

Sizes: XS to XL

Colours: Black and Brown



3-67980C

3-67980C Fabric gloves with leather reinforcements and leather wrist band.

Sizes: XS to XXL

Colours: Black and Brown



3-67980F

3-67980F All leather riding gloves with reinforcements.

Sizes: XS to XL

Colours: Black and Brown



3-6793

3-6793 Leather Gloves with Cotton inserts Between Fingers For Better Fit.

Sizes: XS to XL

Colours: Black and Brown

Summer Gloves

Leather



3-6757

Genuine Cow leather soft gloves with perforation holes. Lycra inside fingers for comfort.

Sizes: Gents XS to XL

Ladies XS to XL

Colours: Full Black and Brown

3-6830

Summer gloves with a combination of leather and perforated material.

Sizes: Gents XS to XL

Ladies XS to XL

Colours: Available in Black and Brown colours.



Stable gloves in genuine Cow analin Leather

Sizes: All Adults

Summer Gloves

Synthetic Plain Sereno with Pinholes



2-682000

Plain synthetic Sereno gloves.

Sizes: 4 to 11

Colours: Black, Dark Blue, White, Brown.



2-682001

Plain sereno gloves with Lycra on Knuckles and fingers for fit.

Sizes: 4 to 11

Colours: Black, Dark Blue, White, Brown



Summer Gloves

Synthetic Plain Sereno with Pinholes



2-682300

2-682300

Plain Synthetic Sereno Gloves with Lycra back and neoprene cuff.

Sizes: 4 to 11

Colours: Black, Dark Blue, White, Brown

2-682301

Convex Design Technical Lycra Gloves with Plain Synthetic Sereno and Neoprene Cuff.

Sizes: 4 to 11

Colours: Different colour combinations of fabric lycra with Black, Dark Blue, White, Brown.



2-682301

Summer Gloves

Synthetic Plain Sereno with Pinholes

2-682304

Plain sereno gloves with Lycra on index and middle finger.

Sizes: 4 to 11

Colours: Black, Dark Blue, White, Brown



2-682303

Plain Synthetic Sereno Gloves with Lycra back.

Sizes: 4 to 11

Colours: Black, Dark Blue, White, Brown



2-682310

Thin grip synthetic sereno gloves with stretch lycra back.

Sizes: 6 to 11

Colours: Different colour combination available.



Summer Gloves

Synthetic Plain Sereno with Pinholes



2-682305

2-682305

Plain synthetic Sereno gloves with designed Lycra backing.

Sizes: 4 to 11

Colours: Black, Dark Blue, White, Brown

2-682306

Plain sereno gloves with Silicone Grip dotting on the front palm for plus Grip effect.

Sizes: 4 to 11

Colours: Black, Dark Blue, White, Brown



2-682306

Summer Gloves

Synthetic Plain Sereno with Pinholes



2-682307

Plain synthetic Sereno gloves with patent line backing.

Sizes: 4 to 11

Colours: Black, Dark Blue, White, Brown

2-682307

2-682308

Plain sereno gloves with perforated back and Diagonal lycra for comfortable fit.

Sizes: 4 to 11

Colours: Black, Dark Blue, White, Brown



2-682308

Summer Gloves

Synthetic Plain Sereno with Pinholes



2-682309

Sereno stretch summer gloves with lycra palm and elegant lycra stretch opening. Air-max Mesh backing ensures enough air circulation for summers.

Sizes: 6 to 11

Colours: Different colours combinations.

2-682309



2-682311

Synthetic summer gloves with Air-max butterfly Mesh backing.

Sizes: 6 to 11

Colours: Different colour with black.



2-682311

Summer Gloves

Synthetic Plain Sereno with Pinholes



2-682313



2-682313

Grip palm synthetic stretch sereno with foreway stretch material backing.

Sizes: 6 to 11

Colours: Different colour combination available.



2-682314-R



2-682314-R

Specially lined textured stretch lycra offers great grip when combined with stretchy grip sereno.

Sizes: 6 to 11

Colours: Maroon, Navy, Black, Gray.

Synthetic Gloves

Digital Sereno



8-6920-R



Digital Sereno front palm and elegantly designed foreway stretching back palm.

Sizes: 6 to 11.

Colours: Different colour combinations.



8-6921-SG

Digital Sereno fabric providing a lot of rein grip and coloured foreway backing in combination with lycra strip.

Sizes: 6 to 11.

Colours: Different colour combinations.

Summer Gloves

Synthetic Plain Sereno with Pinholes



2-682315

Plain Synthetic Sereno Gloves with Lycra line on Index finger.

Sizes: 4 to 11

Colours: Black, Dark Blue, White, Brown

2-682315

2-682316

Plain sereno gloves with Lycra along finger lines.

Sizes: 4 to 11

Colours: Black, Dark Blue, White, Brown



2-682316

Summer Gloves

Synthetic Plain Sereno with Pinholes



2-682317-R

Air-max cool Butterfly Mesh and especially textured sereno combined with stretchy grip sereno and patented back lining make it an elegant and cool summer gloves.

Sizes: 6 to 11

Colours: Black, Navy, brown

2-682317-R

2-682318-R

Kids exciting gloves with grip synthetic on front and colorful lycra on back..

Sizes: 6 years, 8 years, 10 years, 12 years.

Colours: Different colour combinations with black.



2-682318-R

Summer Gloves

Synthetic Plain Sereno with Pinholes



2-6819

2-6819

Grip synthetic sereno and especially designed cut-lined lycra backing. leather used on all critical areas of thumb and fingers.

Sizes: 6 to 11

Colours: Different colour combinations available.



2-682302

2-682302

Grip synthetic sereno, cuffed with diamond stones produce an elegant gloves.

Sizes: Ladies XS to XL

Colour: Black, Navy, white and brown.

Summer Gloves

Micro Suede



9-6895



9-6895

Thin Micro Suede material on the front palm for good gripping grip and control. Printed designed lycra on the back.

Sizes: Gents: XS to XXL

Ladies: XS to XL

Colours: Different colour combinations of fabric lycra with Black, Dark Blue, White, Brown.



9-6891



9-6891

Thin Micro Suede material on the front palm for good riding grip and control. Combined with plain velvet lycra at the back. Coloured piping on the back. Neoprene cuff.

Sizes: Gents: XS to XXL

Ladies: XS to XL

Colours: Different colour combinations available

Summer Gloves

Micro Suede



9-6820

Synthetic gloves with holes and riding reinforcements.

Size: Gents: XS to XL

Ladies: XS to XL

Children: 6 years, 8 years, 10 years, 12 years.

Colours: Different colours Available.



9-6820



9-6728

9-6728

Light weight summer gloves. Back palm is water resistant, breathable and windproof. Front palm is made of very thin and sensitive micro suede material which ensures that the rider gets a feel of the horse's mouth.

Size: Adults: XS to XL

Colour: Available in black colour only

Summer Gloves

Micro Suede



9-6886

9-6886

Ultra micro suede gloves with foreway backing.

Sizes: Adults: XS to XXL
Kids all Sizes

Colours: Available in different colour combinations with black front..



9-6889

Thin Micro suede front for good control and feel. Airy back. Ideal for summers and hot climate riding.

Sizes: Gents: XS to XXL
Ladies: XS to XL

Colours: Available in different colour combinations with black front..



9-6889

Summer Gloves

Micro Suede



9-6823-R



9-6823-R

light weight and thin micro suede material is combined with stretchable foreway material on the back side. A very good reputable summer gloves

Sizes: 5 to 11

Colours: Available in different colour **combinations**.



9-6886A1

9-6886A1

Textured and light weight lycra combinations with thin micro suede material.

Sizes: 6 to 11

Colours: Black

Summer Gloves

Micro Suede



9-6821-SG

Micro suede gloves with air ventilation holes and thin stretchable mesh lining on the back palm make it an excellent riding glove.

Sizes: 6 to 11

Colours: Different Colour combination.

Synthetic Gloves

Goat Textured Grip Sereno



7-6824A

7-6824A

Very Soft & very thin light weight Black Sereno summer gloves in combination with different colours. Thumb and palm are additionally reinforced.

Sizes: Gents: XS to XL

Ladies: XS to XL

Children: 6 yrs, 8 yrs, 10 yrs, 12 yrs



Black/ Purple



Black/ Dark Pink



Black/ Sky Blue



Black/ Red



7-6854

7-6854

Goat designed Soft and Grip PU Sereno Gloves with Foreway Back.

Sizes: 4 to 11

Colours: Different colour combinations available with Black Sereno

Synthetic Gloves

Goat Textured Grip Sereno



7-68551

7-68551

Goat designed Soft and Grip PU Sereno Gloves.

Sizes: 4 to 11

Colours: Different colour combinations available with Black Sereno.



7-682208

7-682208

Goat designed Soft and Grip PU Sereno Gloves.

Sizes: 4 to 11

Colours: Different colour combinations.

Synthetic Gloves

Goat Textured Grip Sereno



7-2-682215

7-2-682215

Goat designed Soft and Grip Synthetic PU Sereno in combination with Plain Sereno backing.

Sizes: 4 to 11

Colours: Different coloured lycras with Black Base Fabric.



7-2-682216

7-2-682216

Goat designed Soft and Grip Synthetic PU Sereno in combination with Plain Sereno backing.

Sizes: 4 to 11

Colours: Different colour combinations of Lycra with Black Base Fabric.

Synthetic Gloves

Goat Textured Grip Sereno



7-682219

7-682219

Goat designed Soft and Grip PU Sereno Gloves.

Sizes: 4 to 11

Colours: Different Colour combinations of Air-Max mesh with Black Base fabric.



7-682218

7-682218

Goat designed Soft and Grip PU Sereno Gloves with Lycra on back palm fingers and thumb.

Sizes: 4 to 11

Colours: Black only

Synthetic Gloves

Goat Textured Grip Sereno



7-682220

7-682220

Kids Gloves with Goat sereno front and foreway back. Horse back design.

Sizes: Kids 4years to 12 years

Ladies XS to XL

Colours: Different colour combinations available combo



7-682221

7-682221

Kids Gloves with Goat Sereno front and lycra back. Stars design.

Sizes: Kids 4 years to 12 years

Colours: Different colour combinations

Synthetic Gloves

Goat Textured Grip Sereno

7-682217

Goat designed Soft and Grip PU Sereno Gloves with hearts.

Sizes: 4 to 11

Colours: Different coloured Hearts on Black Sereno fabric.



7-682217



7-682222

7-682222

Kids Gloves with strong colourful stickers pasted on the back through heat transfer printing. Thin stretchy sereno palm allows excellent fitting and grip.

Sizes: 6 years, 8 years, 10 years, 12 years.

Colours: Different colour combinations.

Synthetic Gloves

Goat Textured Grip Sereno



7-2-682007

7-2-682007

A good combination of 2 grip serenos make it an ideal riding gloves. Colourful lycra binding on the straps add to the elegance.

Sizes: 6 to 11.

Colours: Different colour combinations.



7-68890

Cool Air-max fabric on the back palm and grip synthetic sereno on the front palm. Diamond stones on the straps.

Sizes: 6 to 11

Colours: Different colours with black sereno.



7-68890

Synthetic Gloves

Goat Textured Grip Sereno



A full hand of synthetic grip sereno coupled with a strip of air-max cool mesh backing make it a good summer riding gloves.

Sizes: 6 to 11.

Colours: Different colour combinations

7-682223



Lycra intensive gloves create a second skin gloves. Gloves sereno add to control.

Sizes: 6 to 11

Colours: Different colour combinations.

7-682224

Synthetic Gloves

Goat Textured Grip Sereno



7-682225



Air-max butterfly mesh and grip sereno are an essential feature for summer gloves. No itchy strap closures.

Sizes: 6 to 11.

Colours: Different colour combinations.



7-682226



Full palmed grip sereno provides extra rein grip to the rider. Comfortable inside fingers and air-max mesh adding a lot of air circulation to the gloves.

Sizes: 6 to 11.

Colours: Different colour combinations.

Summer Gloves

Ammara



5-6854

Ammara gloves with stretchable foreway back in different colours.

Sizes: Gents: XS to XXL
Ladies: XS to XL

5-6854



5-68540

Thin Ammara front palm which is long lasting and durable. Foreway stretch fabric at the back allowing perfect fit.

Sizes: Gents: XS to XXL
Ladies: XS to XL

Colours: Different colour combinations

5-68540

Summer Gloves

Ammara



5-68541

Non-tearable Ammara gloves with strong grip. Airy and stretchable back for better control and fit.

Sizes: Gents: XS to XXL

Ladies: XS to XL

Colours: Different colour combinations.



5-68541



5-68542

Ammara performer gloves with an ideal combination of non-tearable grip ammara front and comfortable stretchable lycra backing.

Sizes: Gents: XS to XXL

Ladies: XS to XL

Colours: Different colour combinations.

Summer Gloves

Mesh



709911A



709911A

Mesh Gloves with Sillicone Patch reinforcements.

Sizes: Ladies XS to XL

Colours: Different colour combinations.

709911AA

Mesh Gloves with leather Patch reinforcements.

Sizes: Ladies XS to XL

Colours: Black, Brown



709911AA

Summer Gloves

Pimpled Cotton



67303

67303

Excellent Rein grip pimpled cotton palm summer gloves with stretchable and sweat absorbing fabric on the back.

Sizes: Ladies & Kids

Colours: Different colour combinations.

67304

Stretch lycra backing gloves with grip pimpled dotted front palm for good control. Airy lycra at the back makes it ideal & economical summer gloves.

Sizes: Ladies & Kids

Colours: Different colour combinations.



67304

HEAVY DUTY LEATHER FARRIER LEG CHAP

The farrier leg chap is great to keep these much-needed tools close at hand. The three heavy leather pockets are not only durable but maintain their shape to make retrieving or replacing tools quick and easy. Leg apron can be used alone or in pairs depending on preference. The soft suede leather provides a comfortable yet very durable base for the tool pockets. Wide elastic straps keep the leg apron in place while allowing for movement and comfort.

LEFT LEG



Great to keep these much-needed tools close at hand!



3 durable heavy leather pockets

Keep your tools close at hand

Elastic straps for comfort

RIGHT LEG



Great to keep these much-needed tools close at hand!



3 durable heavy leather pockets

Keep your tools close at hand

Elastic straps for comfort

COOLING ICE GEL BOOT

Ice Therapy: Applying cold treatment is a natural non-invasive drug free treatment. With correct use, Gel Ice boots can aid significantly in reducing typical after-workout swelling and soreness by cooling the tendons, soft tissues and hooves. The use of these gel-boots also helps prevent long term wear and tear on your horse's legs.



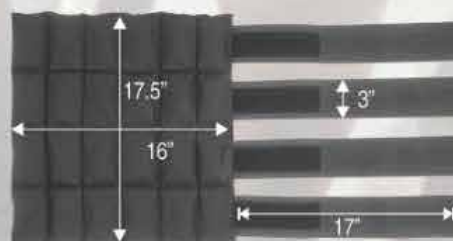
Makes applying cold therapy easier

Heavy denier nylon shell with ice cells

Helpful therapy for arthritis, tendons, ligaments, and soft tissue

For use on the lower leg or hock

"Quick Grip" elastic straps offer compression control



300-48-200 = One pair
300-24-200 = One leg

Quick Cooling wraps are designed to comfort your horse's leg after exercise. This is a fast and easy solution to decrease swelling with cold therapy.

Available colors:-



Sky Blue



Maroon



Green



Navy Blue

SOFT GEL ICE THERAPY KNEE / HOCK WRAP

Ice Therapy: Ice therapy decreases blood flow which reduces inflammation and swelling and helps ease pain. The cold temperature helps to slow metabolism in the tissue around an injury which helps to speed healing and minimize further damage.

Reduces inflammation and eases pain

Gel ice cells stay soft even when frozen

Sold each



1500M-8SG2E-HK



1500-12SG2E-HK



1500D-14SG2E-HK

The soft gel ice cells make this wrap easily shape to fit around the knee or hock of the horse to help treat swelling and inflammation from a recent injury and also to provide comfort to a horse with weak ligaments from a past injury. Keep in the freezer or the cooler at a show so it's always ready when needed. Two elastic "quick grip" straps keep this wrap in place. Rinse and hang to dry.

Sold each.

SOFT GEL ICE THERAPY TENDON WRAP

Ice Therapy: Ice therapy decreases blood flow which reduces inflammation and swelling and helps ease pain. The cold temperature helps to slow metabolism in the tissue around an injury which helps to speed healing and minimize further damage.

Reduces inflammation and eases pain

Gel ice cells stay soft even when frozen

Sold each



1550M-8SG2E



1550-12SG3E



1550D-18SG3E

The soft gel ice cells make this wrap easily shape to fit around the lower leg of the horse to help treat swelling and inflammation from a recent injury and also to provide comfort to a horse with weak ligaments from a past injury. Keep in the freezer or the cooler at a show so it's always ready when needed. Three elastic "quick grip" straps keep this wrap in place. Rinse and hang to dry. Sold each.

AIR MAX AIRPRENE **PROFESSIONAL** FARRIER CHAPS

Waist: 40"-50", Length: 28", Width: 16½"

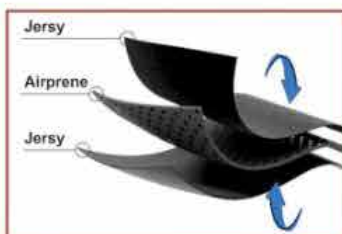
Heavy duty nylon canvas

Padded suede thigh protection

Adjustable waist and leg straps

Article # 315

Upper Layer of 600D Strong Cordura



Lower Layer of Flexible soft
Air-Max Airprene to ensure
breathability.

*Hammer loops, knife pockets,
and magnets for nails!*



"Quick grip"
adjustable belt



"Quick grip"
adjustable leg straps



Convenient
pockets/loops



Two large
magnets

HEAVY DUTY SUEDE LEATHER FARRIER CHAPS

32"-40" waist, 18" inseam, 28" total length

Durable suede leather

Fleece lined knee pads

Adjustable waist & Snap leg straps

Article # 311



Inside fleece lined
knee pads

Sewn knife pocket on right
Strong magnet on left



These affordable suede leather farrier chaps features a sewn knife pocket on right leg, fleece-linked knee pads, and a strong magnet on left leg. The nylon waist strap is adjustable with a slide buckle for fit adjustments. Complete with simple snap leg straps for breakaway function.

HEAVY DUTY SUEDE LEATHER HAY APRON

Article # 310

Waist adjusts approximately 40"-48"

Durable suede leather

Provides extra leg protection

Adjustable waist and leg straps



Protect your legs when throwing hay bales or working around the farm with this quality suede hay apron. Crafted with extra strong stitching and designed with easily adjustable waist and leg straps for best fit.

HIGH QUALITY LEATHER PROFESSIONAL FARRIERS' APRON

Waist: 32"-44", Length: 26", Width: 22"

Convenient pockets/loops

High quality leather

"Quick grip" adjustable belt

Soft padding with suede leather

"Quick grip" adjustable leg straps

Article # 305

*High quality leather,
soft padding with
suede leather!*



"Quick grip"
adjustable belt



"Quick grip"
adjustable leg straps



Convenient
pockets/loops



Our Deluxe Farrier Chaps are constructed from heavy duty nylon canvas material. The wrap-around style thigh features suede overlay with padding for greater protection and comfort. Nylon waist and leg straps are easily adjustable with polymer buckles. Each leg features a knife pocket, hammer loop, and strong magnet to keep common tools easily accessible at all times

PADDED BACK SUPPORT PROFESSIONAL FARRIER APRON

This Professional Farrier Apron is made of durable ripstop fabric with breathable padded mesh backing. Fully adjustable belt with back support. Padded suede patches are perfectly placed for comfort while trimming and shoeing. Two knife pockets on each leg keep all your knives close at hand. A magnet above the knee on each leg keeps nail accessible. Adjustable leg straps for a custom fit.

Article # 314A-01

Waist: 36"-52", Length: 25", Width: 18"

Ripstop fabric with breathable backing

Soft padding with suede leather

4 convenient knife pockets

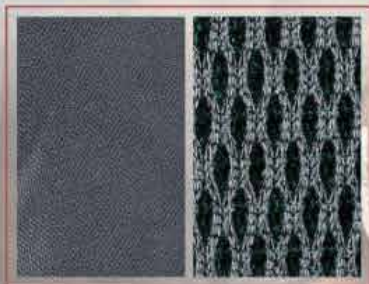
2 large magnets

Adjustable belt with back support

Adjustable leg straps



Padded back support !



Ripstop front, breathable backing !



Two large magnets



Adjustable waist strap



Adjustable leg straps

SUEDE LEATHER **PREMIUM** FARRIER CHAPS

Heavy yet flexible suede leather

Double layer thigh protection

Padded suede thigh protection

Adjustable buckle waist and legs

Article # 312



Two knife pockets for quick access
Two strong magnets for nails

This leather apron provides superior protection while trimming and shoeing! It's made of heavy, yet flexible suede leather with extra protection around the inside of the thighs where you need it most. Both legs feature knife pockets and nail magnets for quick access. It comes complete with a fully adjustable waist and legs with heavy polymer clip buckles for easy on/off.

HEAVY NYLON CANVAS **DELUXE** FARRIER CHAPS

Waist: 40"-50", Length: 28", Width: 16½"

Heavy duty nylon canvas

Padded suede thigh protection

Adjustable waist and leg straps

Article # 313



*Hammer loops, knife pockets,
and magnets for nails!*

Our Deluxe Farrier Chaps are constructed from heavy duty nylon canvas material. The wrap-around style thigh features suede overlay with padding for greater protection and comfort. Nylon waist and leg straps are easily adjustable with polymer buckles. Each leg features a knife pocket, hammer loop, and strong magnet to keep common tools easily accessible at all times



Factory Address : Building #12 Near Manawala Chowk Bedian Road, Lahore- Pakistan.

Office Address: 127 Street # 3, Cavalry Ground Lahore, Pakistan

Contact Number : +92-300-8463890 , +92- 322-6816467 , +92-326-5058081

Email : info@gripers.com.pk , sana@gripers.com.pk , wajiha@gripers.com.pk

Website: www.gripers.com.pk